



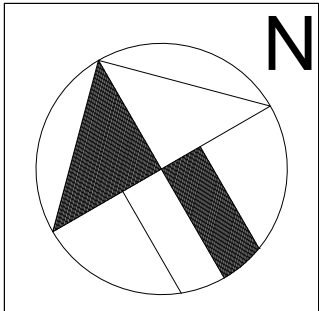
STRATHFIELD COUNCIL  
APPROVAL  
DA2015/100/03  
Date: 20/12/2017

STRATHFIELD COUNCIL  
RECEIVED  
DA2015/100/03  
16 October 2017



Basement 2

NOTE:  
ALL DIMENSIONS AND LEVELS ARE TO BE CHECKED ON SITE PRIOR TO THE COMMENCEMENT OF WORK. DRAWINGS ARE NOT TO BE SCALED. USE ONLY FIGURED DIMENSIONS.  
THIS DRAWING IS PART OF A SET AND MUST BE READ IN CONJUNCTION WITH ALL OTHER DOCUMENTS INCLUDING THE DOOR AND FINISHES SCHEDULES. DO NOT USE THIS DRAWING IN ISOLATION.



SHEET TITLE:  
BASEMENT 2

LOGGED AT: STRATHFIELD COUNCIL

DRAWN BY:  
NE  
CHECKED BY:  
NM  
DATE:  
JULY 2017

PROPOSED RESIDENTIAL DEVELOPMENT  
84 CENTENARY DRIVE,  
STRATHFIELD NSW 2135  
JOB No.  
038-S96-02

ISSUE:  
B  
SCALE:  
1:100 @ B1

DESCRIPTION			
B	REVISED	16.10.2017	NE
A	S96 APPLICATION	19.07.2017	NE
ISSUE	AMENDMENT	DATE	DRAWN

THE GREENS by  
p: (02) 8212 5592 f: (02) 8079 5976  
**conquest**

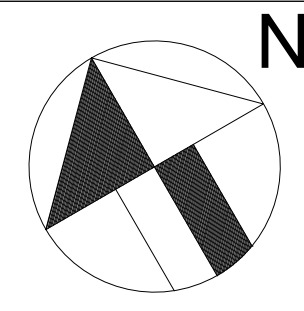
STRATHFIELD COUNCIL  
APPROVAL  
DA2015/100/03  
Date: 20/12/2017

STRATHFIELD COUNCIL  
RECEIVED  
DA2015/100/03  
16 October 2017



Basement 1

NOTE:  
ALL DIMENSIONS AND LEVELS ARE TO BE CHECKED ON SITE. PRIOR TO THE COMMENCEMENT OF WORK. DRAWINGS ARE NOT TO BE SCALED. USE ONLY FOURED DIMENSIONS.  
THIS DRAWING IS PART OF A SET AND MUST BE READ IN CONJUNCTION WITH ALL OTHER DOCUMENTS INCLUDING THE DOOR AND FINISHES SCHEDULES. DO NOT USE THIS DRAWING IN ISOLATION.



SHEET TITLE:  
BASEMENT 2

LOGGED AT: STRATHFIELD COUNCIL

DRAWN BY:  
NE  
CHECKED BY:  
NM  
DATE:  
JULY 2017

PROPOSED RESIDENTIAL DEVELOPMENT  
84 CENTENARY DRIVE,  
STRATHFIELD NSW 2135  
JOB No.  
038-S96-03

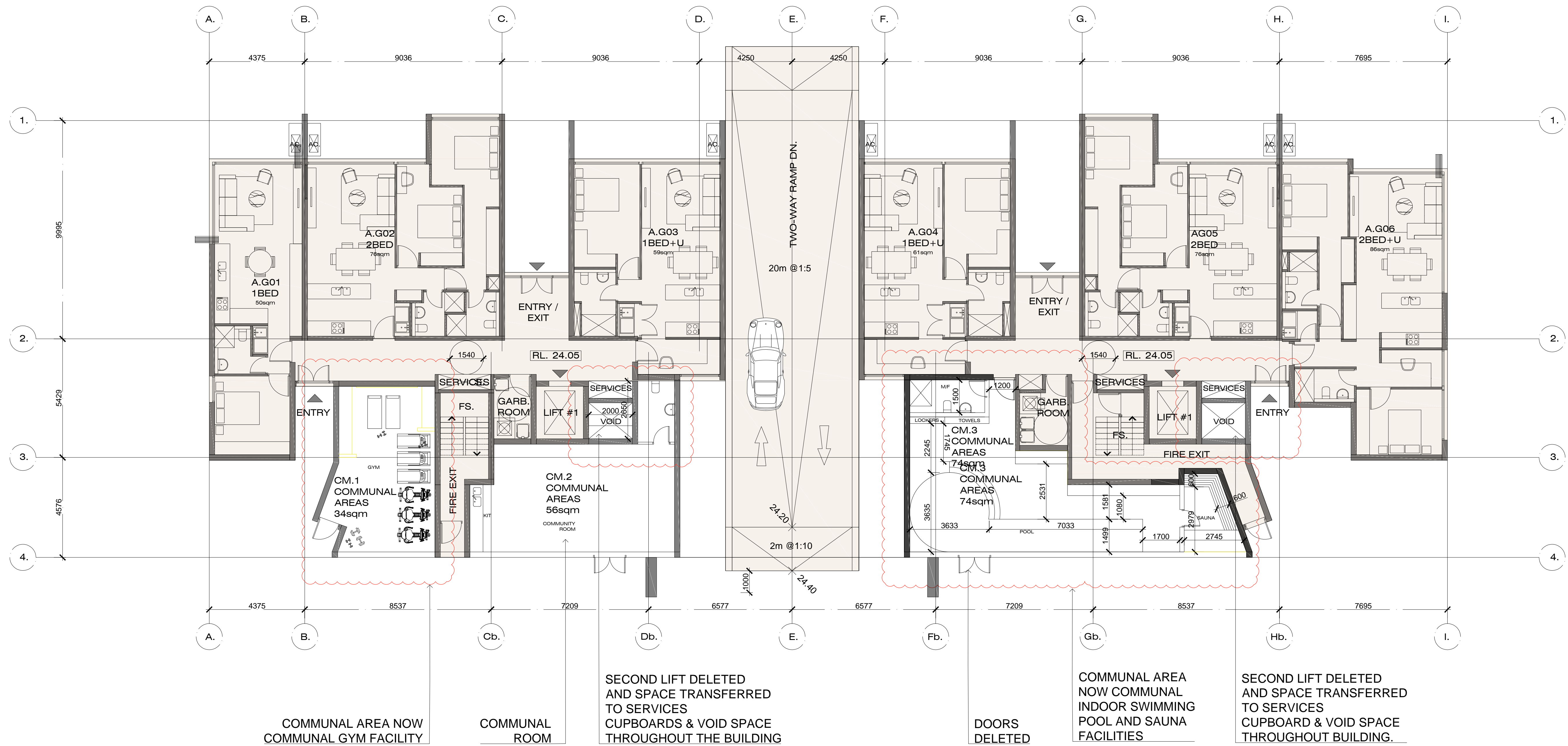
ISSUE:  
B  
SCALE:  
1:100 @ B1

DESCRIPTION			
B	REVISED	16.10.2017	NE
A	S96 APPLICATION	19.07.2017	NE
ISSUE	AMENDMENT	DATE	DRAWN

THE GREENS by  
p: (02) 8212 5592 f: (02) 8079 5976  
**conquest**

STRATHFIELD COUNCIL  
APPROVAL  
DA2015/100/03  
Date: 20/12/2017

STRATHFIELD COUNCIL  
RECEIVED  
DA2015/100/03  
16 October 2017

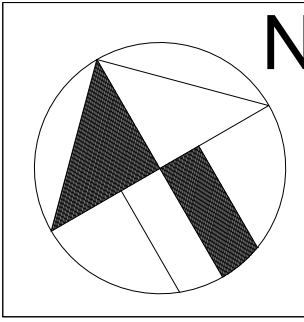


- S96 NOTES:
- ALL SOLID BALUSTRADES NOW TO BE GLASS BALUSTRADES ASIDE FROM RELOCATED SOLID PLANTER PORTIONS
  - SOME BALCONIES RECONFIGURED
  - SOLID PLANTERS AND ALUMINIUM FEATURE STICKS ADDED
  - DELETION OF 2X ADDITIONAL LIFTS AT EACH BUILDING CORE
  - ALL GLAZING TO LIVING AND BEDROOMS RECONFIGURED TO FULL HEIGHT
  - ROOF PROFILE RECONFIGURED
  - NO CHANGES TO APPROVED BUILDING FOOTPRINT OR GFA

DA APPROVED  
DA APPROVED BALCONY CONFIGURATION  
S96 PROPOSED BALCONY CONFIGURATION

Ground Floor  
Building A

NOTE:  
ALL DIMENSIONS AND LEVELS ARE TO BE CHECKED ON SITE. PRIOR TO THE COMMENCEMENT OF WORK. DRAWINGS ARE NOT TO BE SCALED. USE ONLY FIGURED DIMENSIONS.  
THIS DRAWING IS PART OF A SET AND MUST BE READ IN CONJUNCTION WITH ALL OTHER DOCUMENTS INCLUDING THE DOOR AND FINISHES SCHEDULES. DO NOT USE THIS DRAWING IN ISOLATION.  
COPYRIGHT:  
INFORMATION ON THIS DRAWING IS THE COPYRIGHT OF CONQUEST DEVELOPMENTS. COPYING OR USING THIS DRAWING IN WHOLE OR IN PART WITHOUT WRITTEN PERMISSION INFRINGES COPYRIGHT.



SHEET TITLE:  
GROUND FLOOR  
LOGGED AT: STRATHFIELD COUNCIL

DRAWN BY:  
INE  
CHECKED BY:  
NM  
DATE:  
JULY 2017

PROPOSED RESIDENTIAL DEVELOPMENT  
84 CENTENARY DRIVE,  
STRATHFIELD NSW 2135  
JOB No.  
038-S96-04

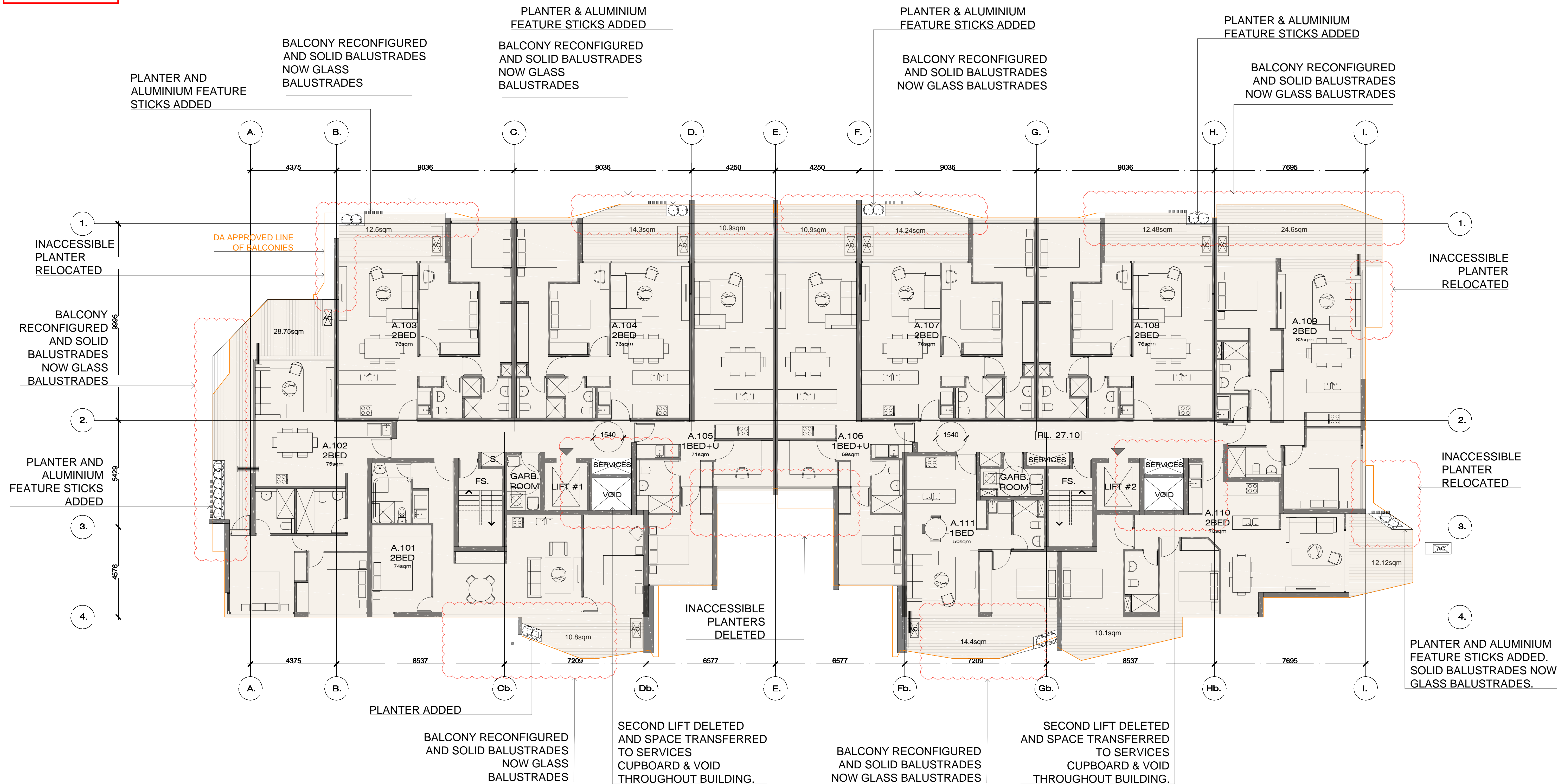
ISSUE:  
B  
SCALE:  
1:100 @ B1

DESCRIPTION			
B	REVISED	16.10.2017	NE
A	S96 APPLICATION	19.07.2017	NE
ISSUE	AMENDMENT	DATE	DRAWN

THE GREENS by  
p: (02) 8212 5592 f: (02) 8079 5976  
**conquest**

STRATHFIELD COUNCIL  
RECEIVED  
DA2015/100/03  
16 October 2017

STRATHFIELD COUNCIL  
APPROVAL  
DA2015/100/03  
Date: 20/12/2017

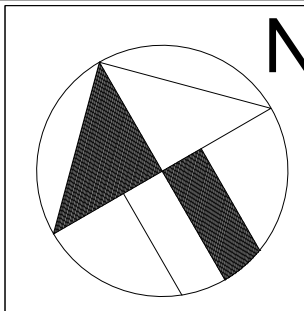


- S96 NOTES:
1. ALL SOLID BALUSTRADES NOW TO BE GLASS BALUSTRADES ASIDE FROM RELOCATED SOLID PLANTER PORTIONS
  2. SOME BALCONIES RECONFIGURED
  3. SOLID PLANTERS AND ALUMINIUM FEATURE STICKS ADDED
  4. DELETION OF 2X ADDITIONAL LIFTS AT EACH BUILDING CORE
  5. ALL GLAZING TO LIVING AND BEDROOMS RECONFIGURED TO FULL HEIGHT
  6. ROOF PROFILE RECONFIGURED
  7. NO CHANGES TO APPROVED BUILDING FOOTPRINT OR GFA

DA APPROVED  
DA APPROVED BALCONY CONFIGURATION  
S96 PROPOSED BALCONY CONFIGURATION

Level 1  
Building A

NOTE:  
ALL DIMENSIONS AND LEVELS ARE TO BE CHECKED ON SITE. PRIOR TO THE COMMENCEMENT OF WORK. DRAWINGS ARE NOT TO BE SCALED. USE ONLY FIGURED DIMENSIONS.  
THIS DRAWING IS PART OF A SET AND MUST BE READ IN CONJUNCTION WITH ALL OTHER DOCUMENTS INCLUDING THE DOOR AND FINISHES SCHEDULES. DO NOT USE THIS DRAWING IN ISOLATION.



SHEET TITLE:  
LEVELS 1

LOGGED AT: STRATHFIELD COUNCIL

DRAWN BY:  
NE  
CHECKED BY:  
NM  
DATE:  
JULY 2017

PROPOSED RESIDENTIAL DEVELOPMENT  
84 CENTENARY DRIVE,  
STRATHFIELD NSW 2135  
JOB No.  
038-S96-05

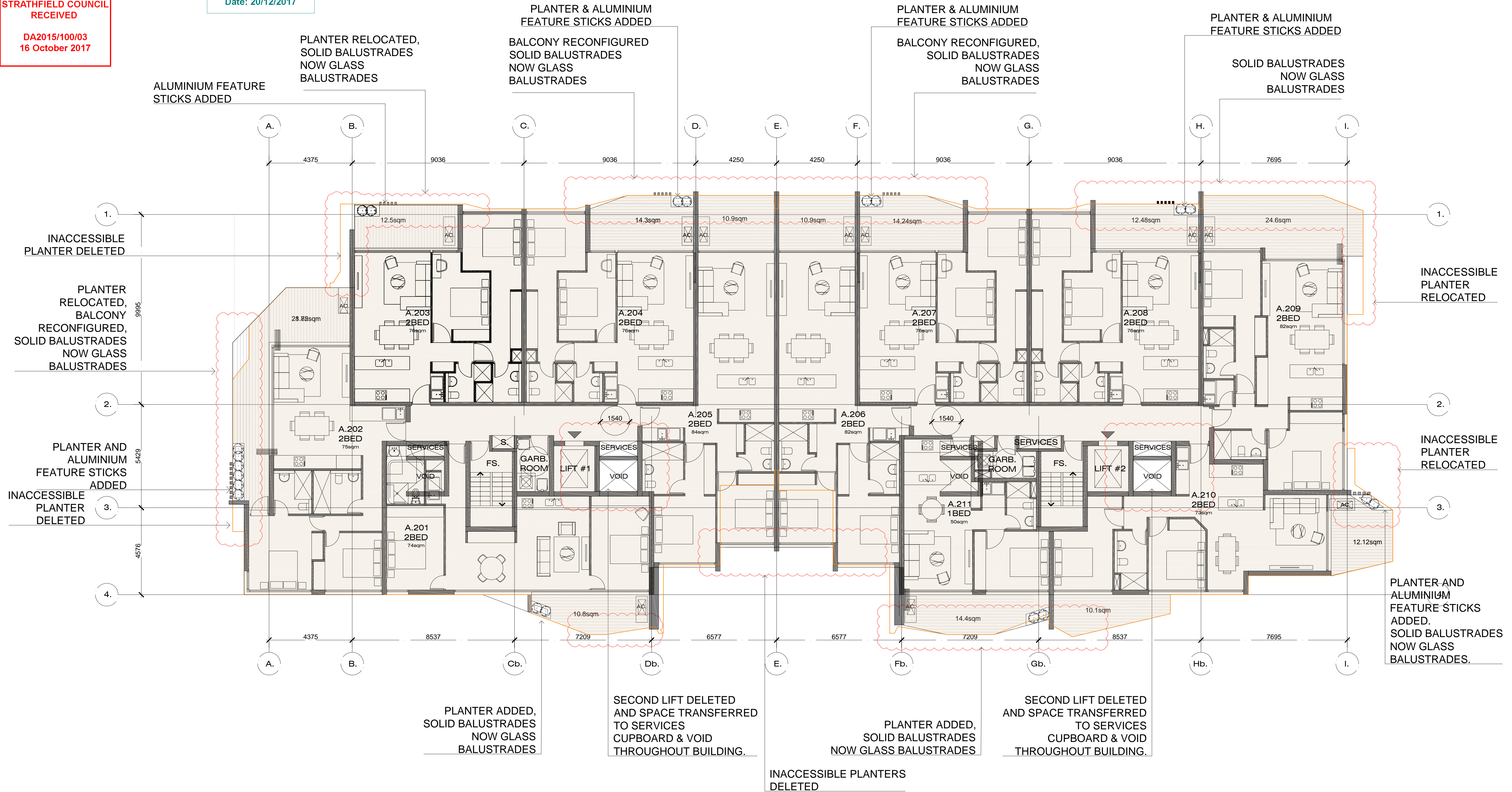
ISSUE:  
B  
SCALE:  
1:100 @ B1

DESCRIPTION	DATE	NE
B	REVISED	16.10.2017
A	S96 APPLICATION	19.07.2017
ISSUE	AMENDMENT	DATE

THE GREENS by  
p: (02) 8212 5592 f: (02) 8079 5976  
**conquest**

STRATHFIELD COUNCIL  
RECEIVED  
DA2015/100/03  
16 October 2017

STRATHFIELD COUNCIL  
APPROVAL  
DA2015/100/03  
Date: 20/12/2017

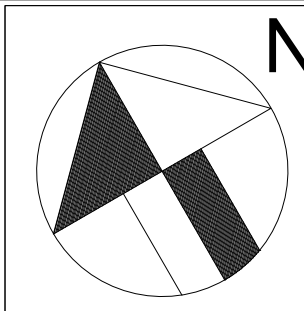


- S96 NOTES:
1. ALL SOLID BALUSTRADES NOW TO BE GLASS BALUSTRADES ASIDE FROM RELOCATED SOLID PLANTER PORTIONS
  2. SOME BALCONIES RECONFIGURED
  3. SOLID PLANTERS AND ALUMINIUM FEATURE STICKS ADDED
  4. DELETION OF 2X ADDITIONAL LIFTS AT EACH BUILDING CORE
  5. ALL GLAZING TO LIVING AND BEDROOMS RECONFIGURED TO FULL HEIGHT
  6. ROOF PROFILE RECONFIGURED
  7. NO CHANGES TO APPROVED BUILDING FOOTPRINT OR GFA

DA APPROVED  
DA APPROVED BALCONY CONFIGURATION  
S96 PROPOSED BALCONY CONFIGURATION

Level 2-4  
Building A

NOTE:  
ALL DIMENSIONS AND LEVELS ARE TO BE CHECKED ON SITE. PRIOR TO THE COMMENCEMENT OF WORK. DRAWINGS ARE NOT TO BE SCALED. USE ONLY FIGURED DIMENSIONS.  
THIS DRAWING IS PART OF A SET AND MUST BE READ IN CONJUNCTION WITH ALL OTHER DOCUMENTS INCLUDING THE DOOR AND FINISHES SCHEDULES. DO NOT USE THIS DRAWING IN ISOLATION.



SHEET TITLE:  
LEVELS 2-4

LOGGED AT: STRATHFIELD COUNCIL

DRAWN BY:  
NE  
CHECKED BY:  
NM  
DATE:  
JULY 2017

PROPOSED RESIDENTIAL DEVELOPMENT  
84 CENTENARY DRIVE,  
STRATHFIELD NSW 2135  
JOB No.  
038-S96-06

ISSUE:  
B

SCALE:  
1:100 @ B1

DESCRIPTION	DATE	NE
B REVISED	16.10.2017	NE
A S96 APPLICATION	19.07.2017	NE
ISSUE	DATE	DRAWN

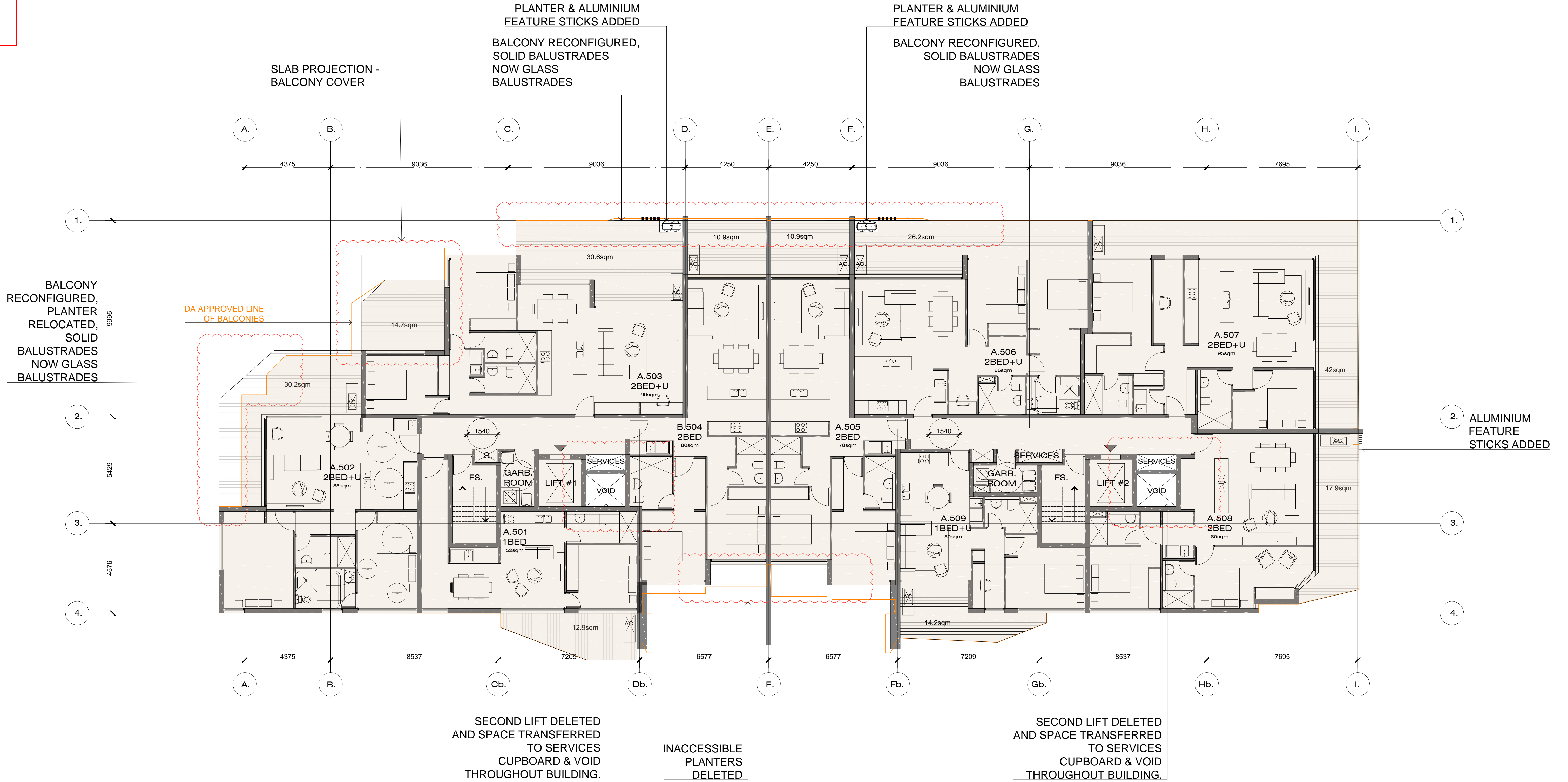
THE GREENS by  
p: (02) 8212 5592 f: (02) 8079 5976  
**conquest**

STRATHFIELD COUNCIL  
APPROVAL

DA2015/100/03  
Date: 20/12/2017

STRATHFIELD COUNCIL  
RECEIVED

DA2015/100/03  
16 October 2017



S96 NOTES:

1. ALL SOLID BALUSTRADES NOW TO BE GLASS BALUSTRADES ASIDE FROM RELOCATED SOLID PLANTER PORTIONS
2. SOME BALCONIES RECONFIGURED
3. SOLID PLANTERS AND ALUMINIUM FEATURE STICKS ADDED
4. DELETION OF 2X ADDITIONAL LIFTS AT EACH BUILDING CORE
5. ALL GLAZING TO LIVING AND BEDROOMS RECONFIGURED TO FULL HEIGHT
6. ROOF PROFILE RECONFIGURED
7. NO CHANGES TO APPROVED BUILDING FOOTPRINT OR GFA

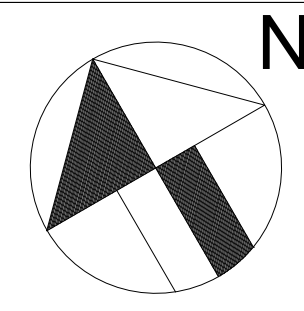
DA APPROVED

DA APPROVED BALCONY CONFIGURATION

S96 PROPOSED BALCONY CONFIGURATION

Level 5-6  
Building A

NOTE:  
ALL DIMENSIONS AND LEVELS ARE TO BE CHECKED ON SITE PRIOR TO THE COMMENCEMENT OF WORK. DRAWINGS ARE NOT TO BE SCALED. USE ONLY FIGURED DIMENSIONS.  
THIS DRAWING IS PART OF A SET AND MUST BE READ IN CONJUNCTION WITH ALL OTHER DOCUMENTS INCLUDING THE SCOPED AND FINISHES SCHEDULES. DO NOT USE THIS DRAWING IN ISOLATION.



SHEET TITLE:  
LEVELS 5-6

LOGGED AT: STRATHFIELD COUNCIL

DRAWN BY:  
NE  
CHECKED BY:  
NM  
DATE:  
JULY 2017

PROPOSED RESIDENTIAL DEVELOPMENT  
84 CENTENARY DRIVE,  
STRATHFIELD NSW 2135

JOB No.  
038-S96-07

ISSUE:  
B

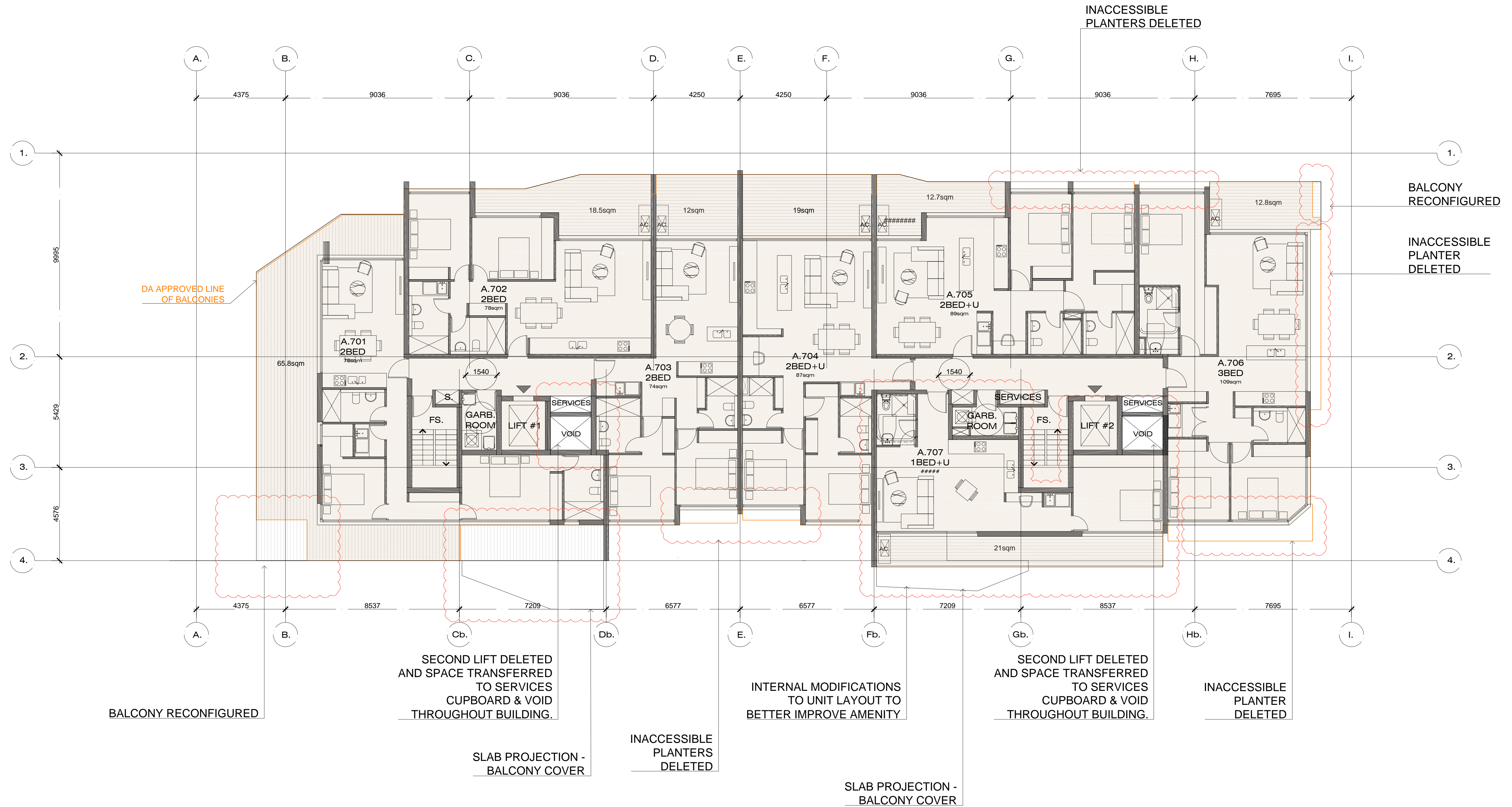
SCALE:  
1:100 @ B1

DESCRIPTION	DATE	BY
B REVISED	16.10.2017	NE
A S96 APPLICATION	19.07.2017	NE
ISSUE	DATE	DRAWN
AMENDMENT		

THE GREENS by  
p: (02) 8212 5592 f: (02) 8079 5976  
**conquest**

STRATHFIELD COUNCIL  
RECEIVED  
DA2015/100/03  
16 October 2017

STRATHFIELD COUNCIL  
APPROVAL  
DA2015/100/03  
Date: 20/12/2017

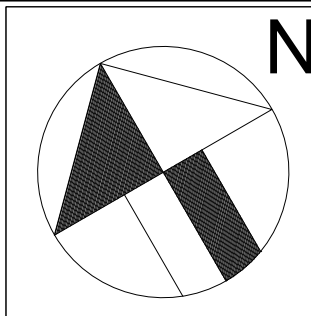


- S96 NOTES:
1. ALL SOLID BALUSTRADES NOW TO BE GLASS BALUSTRADES ASIDE FROM RELOCATED SOLID PLANTER PORTIONS
  2. SOME BALCONIES RECONFIGURED
  3. SOLID PLANTERS AND ALUMINIUM FEATURE STICKS ADDED
  4. DELETION OF 2X ADDITIONAL LIFTS AT EACH BUILDING CORE
  5. ALL GLAZING TO LIVING AND BEDROOMS RECONFIGURED TO FULL HEIGHT
  6. ROOF PROFILE RECONFIGURED
  7. NO CHANGES TO APPROVED BUILDING FOOTPRINT OR GFA

DA APPROVED  
DA APPROVED BALCONY CONFIGURATION  
S96 PROPOSED BALCONY CONFIGURATION

Level 7-8  
Building A

NOTE:  
ALL DIMENSIONS AND LEVELS ARE TO BE CHECKED ON SITE. PRIOR TO THE COMMENCEMENT OF WORK, DRAWINGS ARE NOT TO BE SCALED. USE ONLY FIGURED DIMENSIONS.  
THIS DRAWING IS PART OF A SET AND MUST BE READ IN CONJUNCTION WITH ALL OTHER DOCUMENTS INCLUDING THE DOOR AND FINISHES SCHEDULES. DO NOT USE THIS DRAWING IN ISOLATION.



SHEET TITLE:  
LEVELS 7-8

LOGGED AT: STRATHFIELD COUNCIL

DRAWN BY:  
NE  
CHECKED BY:  
NM  
DATE:  
JULY 2017

PROPOSED RESIDENTIAL DEVELOPMENT  
84 CENTENARY DRIVE,  
STRATHFIELD NSW 2135  
JOB No.  
038-S96-08

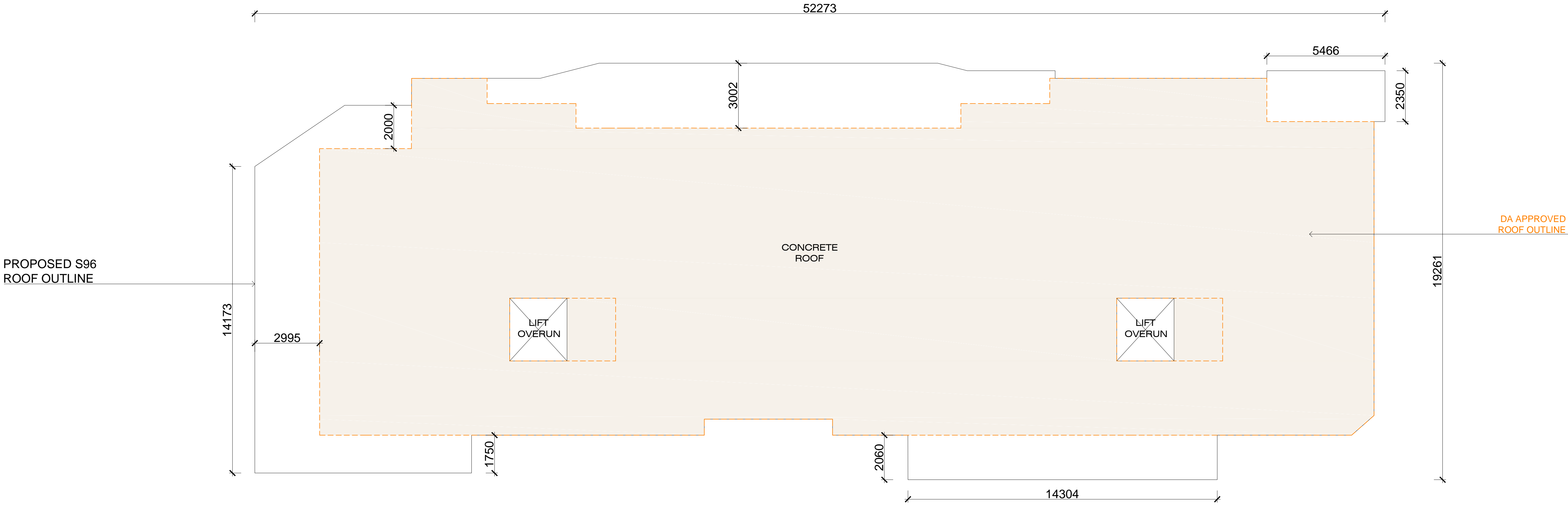
ISSUE:  
B  
SCALE:  
1:100 @ B1

DESCRIPTION	DATE	NE
B REVISED	16.10.2017	NE
A S96 APPLICATION	19.07.2017	NE
ISSUE	AMENDMENT	DATE DRAWN

THE GREENS by  
p: (02) 8212 5592 f: (02) 8079 5976  
**conquest**

STRATHFIELD COUNCIL  
RECEIVED  
  
DA2015/100/03  
16 October 2017

STRATHFIELD COUNCIL  
APPROVAL  
  
DA2015/100/03  
Date: 20/12/2017

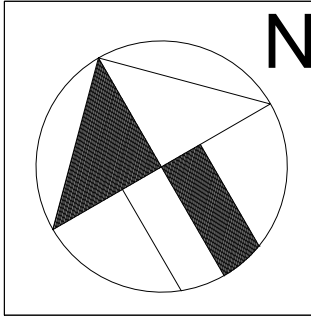


- S96 NOTES:
1. ALL SOLID BALUSTRADES NOW TO BE GLASS BALUSTRADES ASIDE FROM RELOCATED SOLID PLANTER PORTIONS
  2. SOME BALCONIES RECONFIGURED
  3. SOLID PLANTERS AND ALUMINIUM FEATURE STICKS ADDED
  4. DELETION OF 2X ADDITIONAL LIFTS AT EACH BUILDING CORE
  5. ALL GLAZING TO LIVING AND BEDROOMS RECONFIGURED TO FULL HEIGHT
  6. ROOF PROFILE RECONFIGURED
  7. NO CHANGES TO APPROVED BUILDING FOOTPRINT OR GFA

DA APPROVED  
DA APPROVED BALCONY CONFIGURATION  
S96 PROPOSED BALCONY CONFIGURATION

Roof  
Building A

NOTE:  
ALL DIMENSIONS AND LEVELS ARE TO BE CHECKED ON SITE. PRIOR TO THE COMMENCEMENT OF WORK. DRAWINGS ARE NOT TO BE SCALED. USE ONLY FIGURED DIMENSIONS.  
THIS DRAWING IS PART OF A SET AND MUST BE READ IN CONJUNCTION WITH ALL OTHER DOCUMENTS INCLUDING THE DOOR AND FINISHES SCHEDULES. DO NOT USE THIS DRAWING IN ISOLATION.



SHEET TITLE:  
ROOF

LOGGED AT: STRATHFIELD COUNCIL

DRAWN BY:  
NE  
CHECKED BY:  
NM  
DATE:  
JULY 2017

PROPOSED RESIDENTIAL DEVELOPMENT  
84 CENTENARY DRIVE,  
STRATHFIELD NSW 2135

JOB No.  
038-S96-09

ISSUE:  
B

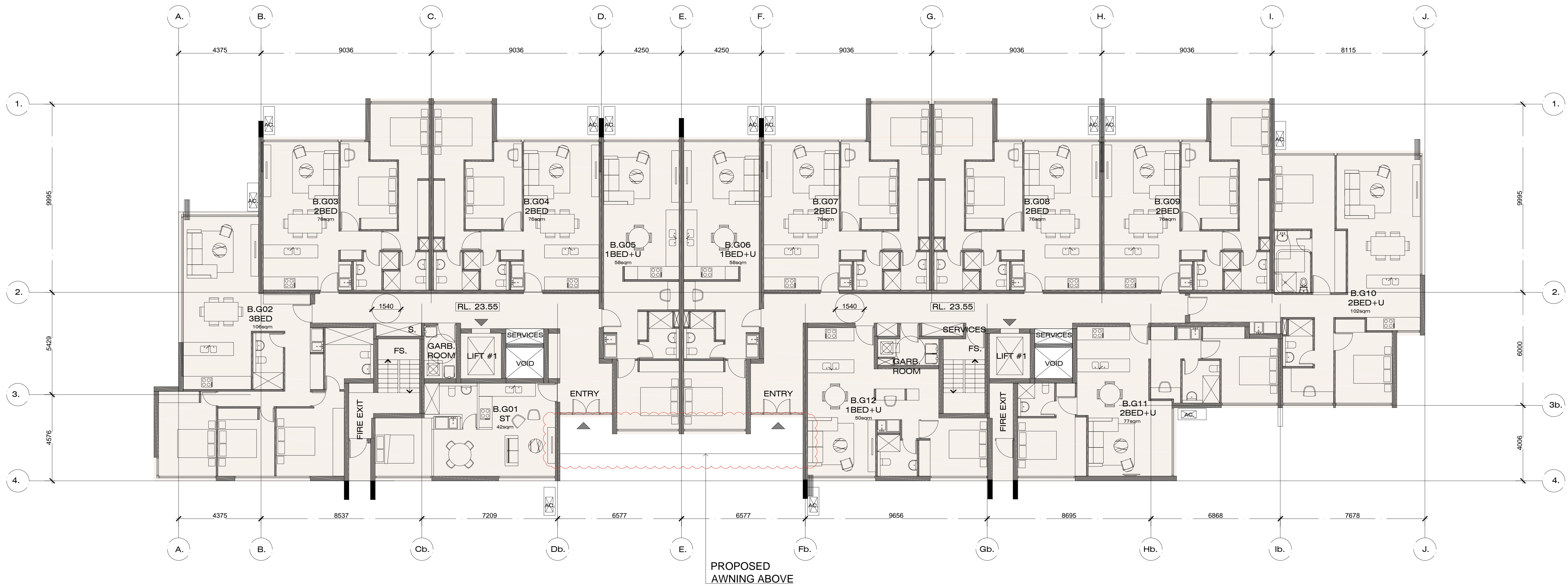
SCALE:  
1:100 @ B1

DESCRIPTION			
B	REVISED	16.10.2017	NE
A	S96 APPLICATION	19.07.2017	NE
ISSUE	AMENDMENT	DATE	DRAWN

THE GREENS by  
p: (02) 8212 5592 f: (02) 8079 5976  
**conquest**

STRATHFIELD COUNCIL  
RECEIVED  
  
DA2015/100/03  
16 October 2017

STRATHFIELD COUNCIL  
APPROVAL  
  
DA2015/100/03  
Date: 20/12/2017

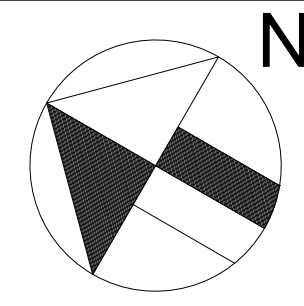


- S96 NOTES:
1. ALL SOLID BALUSTRADES NOW TO BE GLASS BALUSTRADES ASIDE FROM RELOCATED SOLID PLANTER PORTIONS
  2. SOME BALCONIES RECONFIGURED
  3. SOLID PLANTERS AND ALUMINIUM FEATURE STICKS ADDED
  4. DELETION OF 2X ADDITIONAL LIFTS AT EACH BUILDING CORE
  5. ALL GLAZING TO LIVING AND BEDROOMS RECONFIGURED TO FULL HEIGHT
  6. ROOF PROFILE RECONFIGURED
  7. NO CHANGES TO APPROVED BUILDING FOOTPRINT OR GFA

DA APPROVED  
DA APPROVED BALCONY CONFIGURATION  
S96 PROPOSED BALCONY CONFIGURATION

Ground Floor  
Building B

NOTE:  
ALL DIMENSIONS AND LEVELS ARE TO BE CHECKED ON SITE. PRIOR TO THE COMMENCEMENT OF WORK, DRAWINGS ARE NOT TO BE SCALED. USE ONLY FIGURED DIMENSIONS.  
THIS DRAWING IS PART OF A SET AND MUST BE READ IN CONJUNCTION WITH ALL OTHER DOCUMENTS INCLUDING THE DOOR AND FINISHES SCHEDULES. DO NOT USE THIS DRAWING IN ISOLATION.



SHEET TITLE:  
GROUND FLOOR

LOGGED AT: STATFIELD COUNCIL

DRAWN BY:  
NE  
CHECKED BY:  
NM  
DATE:  
JULY 2017

PROPOSED RESIDENTIAL DEVELOPMENT  
84 CENTENARY DRIVE,  
STRATHFIELD NSW 2135

JOB No.  
038-S96-10

ISSUE:  
B

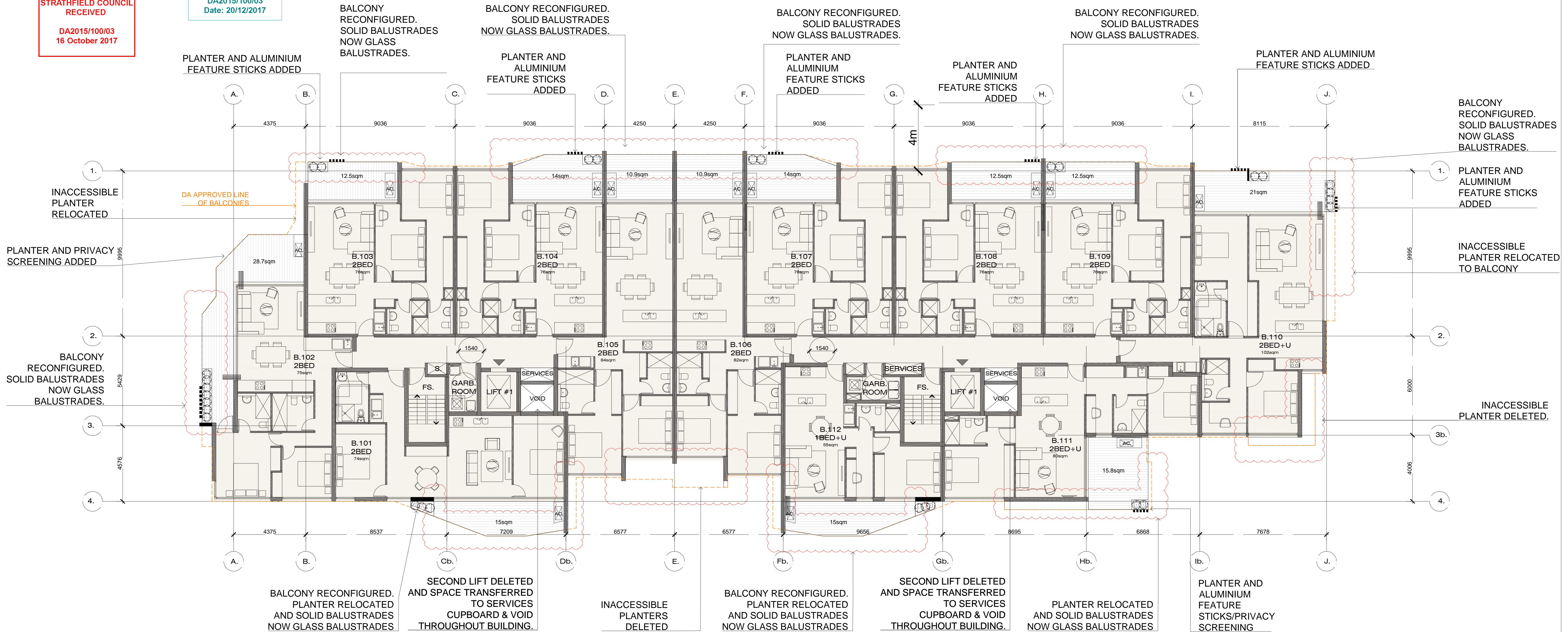
SCALE:  
1:100 @ B1

DESCRIPTION	DATE	DRAWN
B	16.10.2017	NE
A	19.07.2017	NE
ISSUE	DATE	DRAWN
S96 APPLICATION		
AMENDMENT		

THE GREENS by  
p: (02) 8212 5592 f: (02) 8079 5976  
**conquest**

STRATHFIELD COUNCIL  
RECEIVED  
DA2015/100/03  
16 October 2017

STRATHFIELD COUNCIL  
APPROVAL  
DA2015/100/03  
Date: 20/12/2017



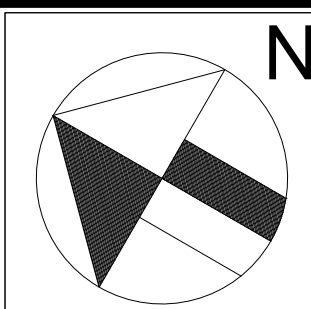
S96 NOTES:

1. ALL SOLID BALUSTRADES NOW TO BE GLASS BALUSTRADES ASIDE FROM RELOCATED SOLID PLANTER PORTIONS
2. SOME BALCONIES RECONFIGURED
3. SOLID PLANTERS AND ALUMINIUM FEATURE STICKS ADDED
4. DELETION OF 2X ADDITIONAL LIFTS AT EACH BUILDING CORE
5. ALL GLAZING TO LIVING AND BEDROOMS RECONFIGURED TO FULL HEIGHT
6. ROOF PROFILE RECONFIGURED
7. NO CHANGES TO APPROVED BUILDING FOOTPRINT OR GFA

DA APPROVED  
DA APPROVED BALCONY CONFIGURATION  
S96 PROPOSED BALCONY CONFIGURATION

Level 1-4  
Building B

NOTE:  
ALL DIMENSIONS AND LEVELS ARE TO BE CHECKED ON SITE PRIOR TO THE COMMENCEMENT OF WORK. DRAWINGS ARE NOT TO BE SCALED. USE ONLY FIGURED DIMENSIONS.  
THIS DRAWING IS PART OF A SET AND MUST BE READ IN CONJUNCTION WITH ALL OTHER DOCUMENTS INCLUDING THE DOOR AND FINISHES SCHEDULES. DO NOT USE THIS DRAWING IN ISOLATION.



SHEET TITLE:  
LEVELS 1-4

LOGGED AT: STRATHFIELD COUNCIL

DRAWN BY:  
NE  
CHECKED BY:  
NM  
DATE:  
JULY 2017

PROPOSED RESIDENTIAL DEVELOPMENT  
84 CENTENARY DRIVE,  
STRATHFIELD NSW 2135  
JOB No.  
038-S96-11

ISSUE:  
B  
SCALE:  
1:100 @ B1

DESCRIPTION	DATE	NE
B REVISED	16.10.2017	NE
A S96 APPLICATION	19.07.2017	NE
ISSUE	AMENDMENT	DRAWN

THE GREENS by  
p: (02) 8212 5592 f: (02) 8079 5976  
**conquest**

DA2015/100/03  
Date: 20/12/2017

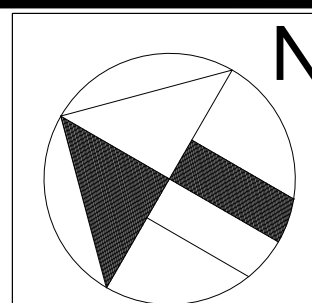
DA2015/100/03  
16 October 2017



- DA APPROVED
- DA APPROVED BALCONY  
CONFIGURATION
- S96 PROPOSED BALCONY  
CONFIGURATION

Level 5-6  
Building B

NOTE:  
ALL DIMENSIONS AND LEVELS ARE TO BE CHECKED ON SITE. PRIOR TO THE COMMENCEMENT OF WORK, DRAWINGS ARE NOT TO BE SCALED. USE ONLY FIGURED DIMENSIONS.  
THIS DRAWING IS PART OF A SET AND MUST BE READ IN CONJUNCTION WITH ALL OTHER DOCUMENTS INCLUDING THE DOOR AND FINISHES SCHEDULES. DO NOT USE THIS DRAWING IN ISOLATION.



SHEET TITLE:  
LEVELS 5-6

LOGGED AT: STRATHFIELD COUNCIL

DRAWN BY:  
NE

CHECKED BY:  
NM

DATE:  
JULY 2017

PROPOSED RESIDENTIAL DEVELOPMENT  
84 CENTENARY DRIVE,  
STRATHFIELD NSW 2135

JOB No.  
038-S96-12

ISSUE:  
B

SCALE:  
@ R1

1:100 @ B1

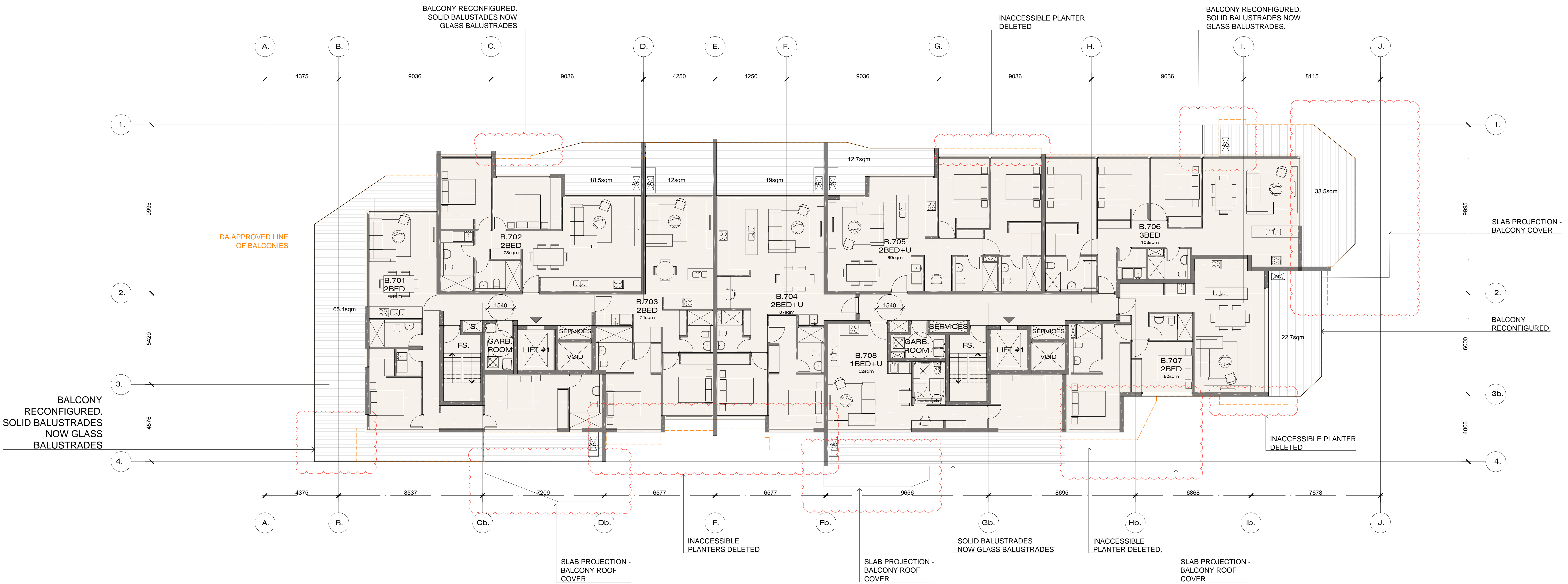
	DESCRIPTION		
B	REVISED	16.10.2017	NE
A	S96 APPLICATION	19.07.2017	NE
ISSUE	AMENDMENT	DATE	DRAWN

**THE GREENS by**  
p: (02) 8212 5592 f: (02) 8079 5976

**conquest**

STRATHFIELD COUNCIL  
APPROVAL  
DA2015/100/03  
Date: 20/12/2017

STRATHFIELD COUNCIL  
RECEIVED  
DA2015/100/03  
16 October 2017



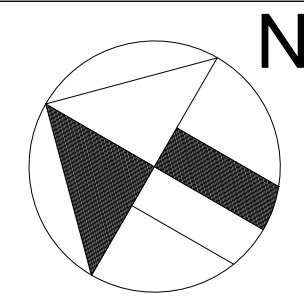
- S96 NOTES:
1. ALL SOLID BALUSTRADES NOW TO BE GLASS BALUSTRADES ASIDE FROM RELOCATED SOLID PLANTER PORTIONS
  2. SOME BALCONIES RECONFIGURED
  3. SOLID PLANTERS AND ALUMINIUM FEATURE STICKS ADDED
  4. DELETION OF 2X ADDITIONAL LIFTS AT EACH BUILDING CORE
  5. ALL GLAZING TO LIVING AND BEDROOMS RECONFIGURED TO FULL HEIGHT
  6. ROOF PROFILE RECONFIGURED
  7. NO CHANGES TO APPROVED BUILDING FOOTPRINT OR GFA

DA APPROVED  
DA APPROVED BALCONY CONFIGURATION  
S96 PROPOSED BALCONY CONFIGURATION

Level 7-8  
Building B

THE GREENS by  
p: (02) 8212 5592 f: (02) 8079 5976  
**conquest**

NOTE:  
ALL DIMENSIONS AND LEVELS ARE TO BE CHECKED ON SITE. PRIOR TO THE COMMENCEMENT OF WORK, DRAWINGS ARE NOT TO BE SCALED. USE ONLY FIGURED DIMENSIONS.  
THIS DRAWING IS PART OF A SET AND MUST BE READ IN CONJUNCTION WITH ALL OTHER DOCUMENTS INCLUDING THE DOOR AND FINISHES SCHEDULES. DO NOT USE THIS DRAWING IN ISOLATION.



SHEET TITLE:  
LEVELS 7-8

LOGGED AT: STRATHFIELD COUNCIL

DRAWN BY:  
NE  
CHECKED BY:  
NM  
DATE:  
JULY 2017

PROPOSED RESIDENTIAL DEVELOPMENT  
84 CENTENARY DRIVE,  
STRATHFIELD NSW 2135  
JOB No.  
038-S96-13

ISSUE:  
B

SCALE:  
1:100 @ B1

DESCRIPTION

B  
A  
ISSUE  
REVISED  
S96 APPLICATION  
AMENDMENT

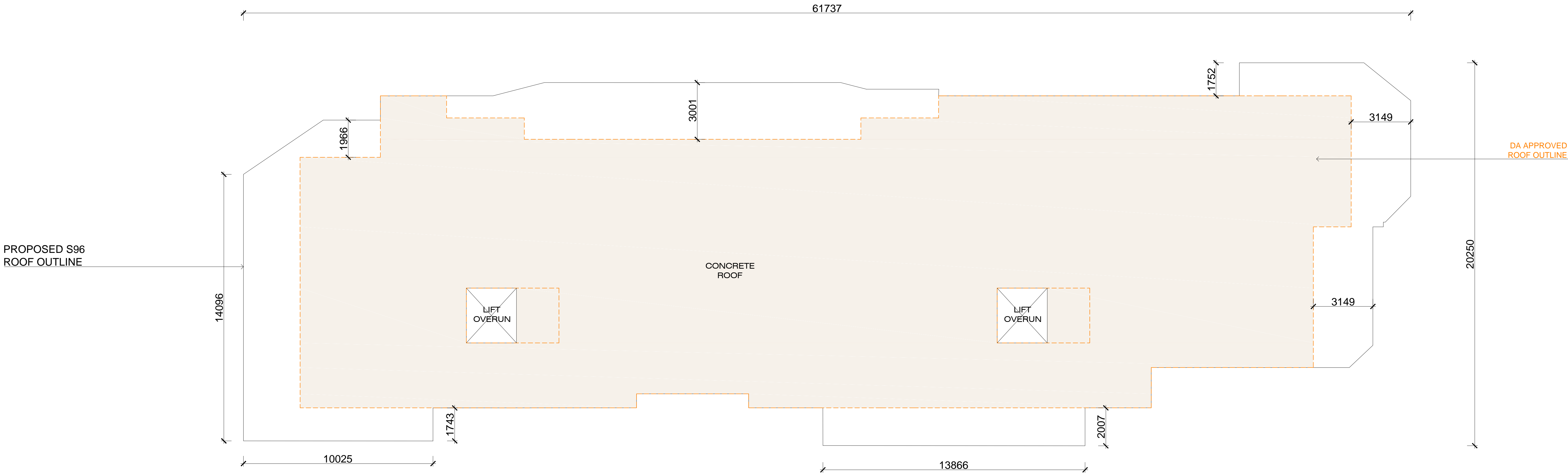
16.10.2017  
19.07.2017  
DATE  
DRAWN

STRATHFIELD COUNCIL  
RECEIVED

DA2015/100/03  
16 October 2017

STRATHFIELD COUNCIL  
APPROVAL

DA2015/100/03  
Date: 20/12/2017

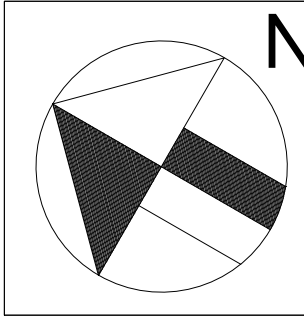


- S96 NOTES:
1. ALL SOLID BALUSTRADES NOW TO BE GLASS BALUSTRADES ASIDE FROM RELOCATED SOLID PLANTER PORTIONS
  2. SOME BALCONIES RECONFIGURED
  3. SOLID PLANTERS AND ALUMINIUM FEATURE STICKS ADDED
  4. DELETION OF 2X ADDITIONAL LIFTS AT EACH BUILDING CORE
  5. ALL GLAZING TO LIVING AND BEDROOMS RECONFIGURED TO FULL HEIGHT
  6. ROOF PROFILE RECONFIGURED
  7. NO CHANGES TO APPROVED BUILDING FOOTPRINT OR GFA

DA APPROVED  
DA APPROVED BALCONY CONFIGURATION  
S96 PROPOSED BALCONY CONFIGURATION

Roof  
Building B

NOTE:  
ALL DIMENSIONS AND LEVELS ARE TO BE CHECKED ON SITE. PRIOR TO THE COMMENCEMENT OF WORK, DRAWINGS ARE NOT TO BE SCALED. USE ONLY FIGURED DIMENSIONS.  
THIS DRAWING IS PART OF A SET AND MUST BE READ IN CONJUNCTION WITH ALL OTHER DOCUMENTS INCLUDING THE DOOR AND FINISHES SCHEDULES. DO NOT USE THIS DRAWING IN ISOLATION.



SHEET TITLE:  
ROOF

LOGGED AT: STRATHFIELD COUNCIL

DRAWN BY:  
NE  
CHECKED BY:  
NM  
DATE:  
JULY 2017

PROPOSED RESIDENTIAL DEVELOPMENT  
84 CENTENARY DRIVE,  
STRATHFIELD NSW 2135

JOB No.  
038-S96-14

ISSUE:  
B

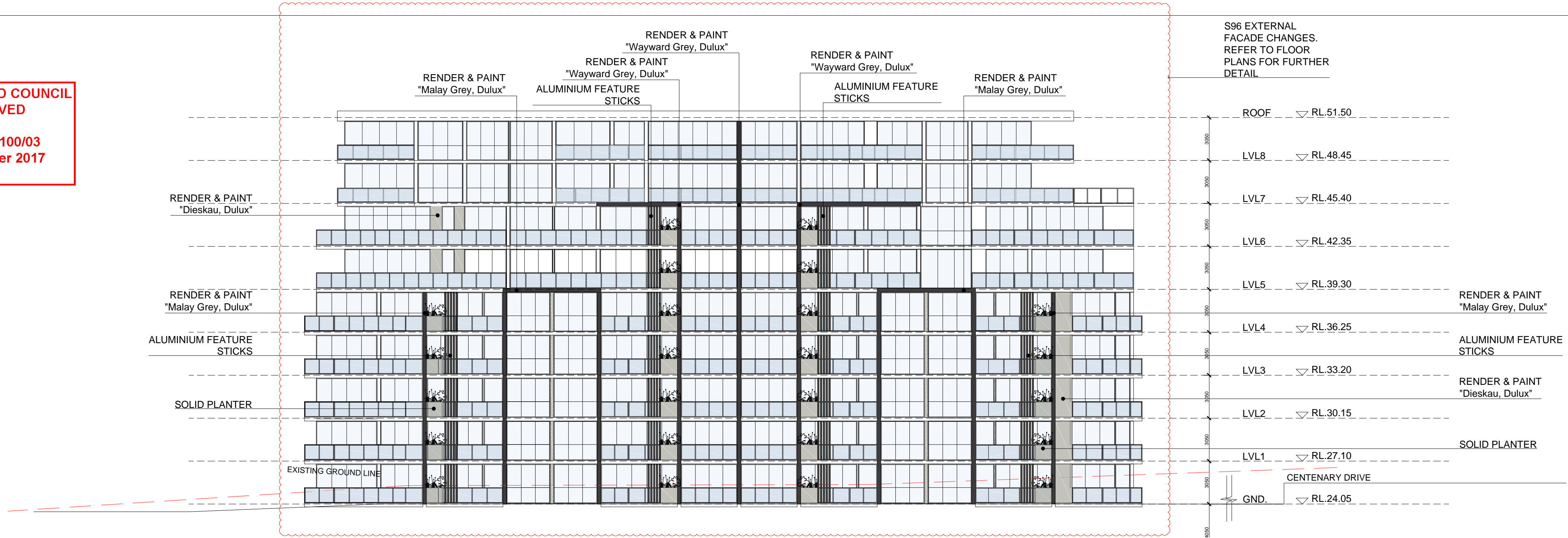
SCALE:  
1:100 @ B1

DESCRIPTION			
B	REVISED	16.10.2017	NE
A	S96 APPLICATION	19.07.2017	NE
ISSUE	AMENDMENT	DATE	DRAWN

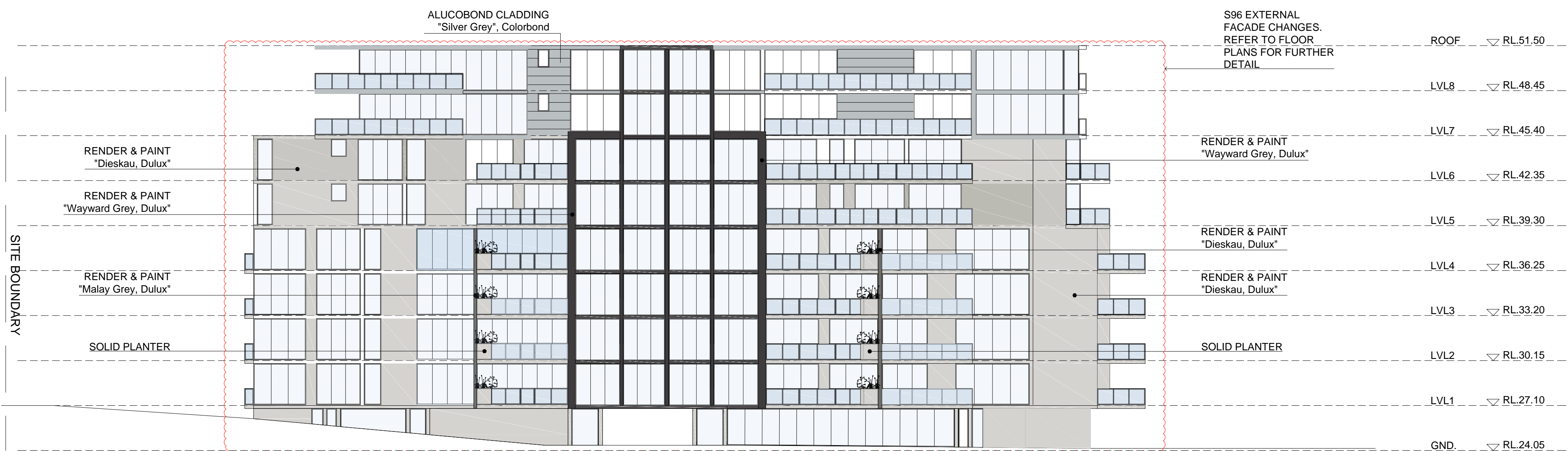
THE GREENS by  
p: (02) 8212 5592 f: (02) 8079 5976  
**conquest**

STRATHFIELD COUNCIL  
RECEIVED  
DA2015/100/03  
16 October 2017

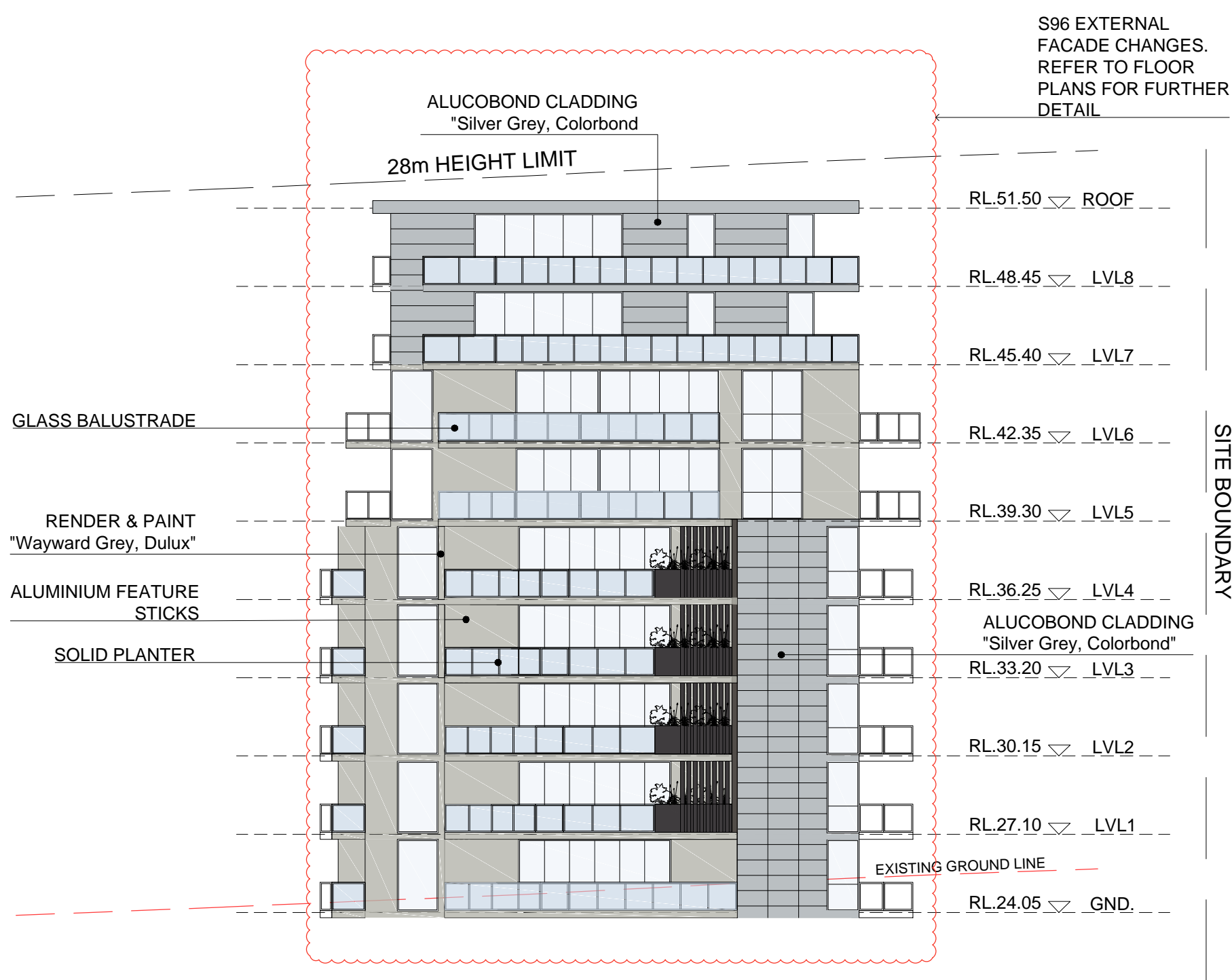
STRATHFIELD COUNCIL  
APPROVAL  
DA2015/100/03  
Date: 20/12/2017



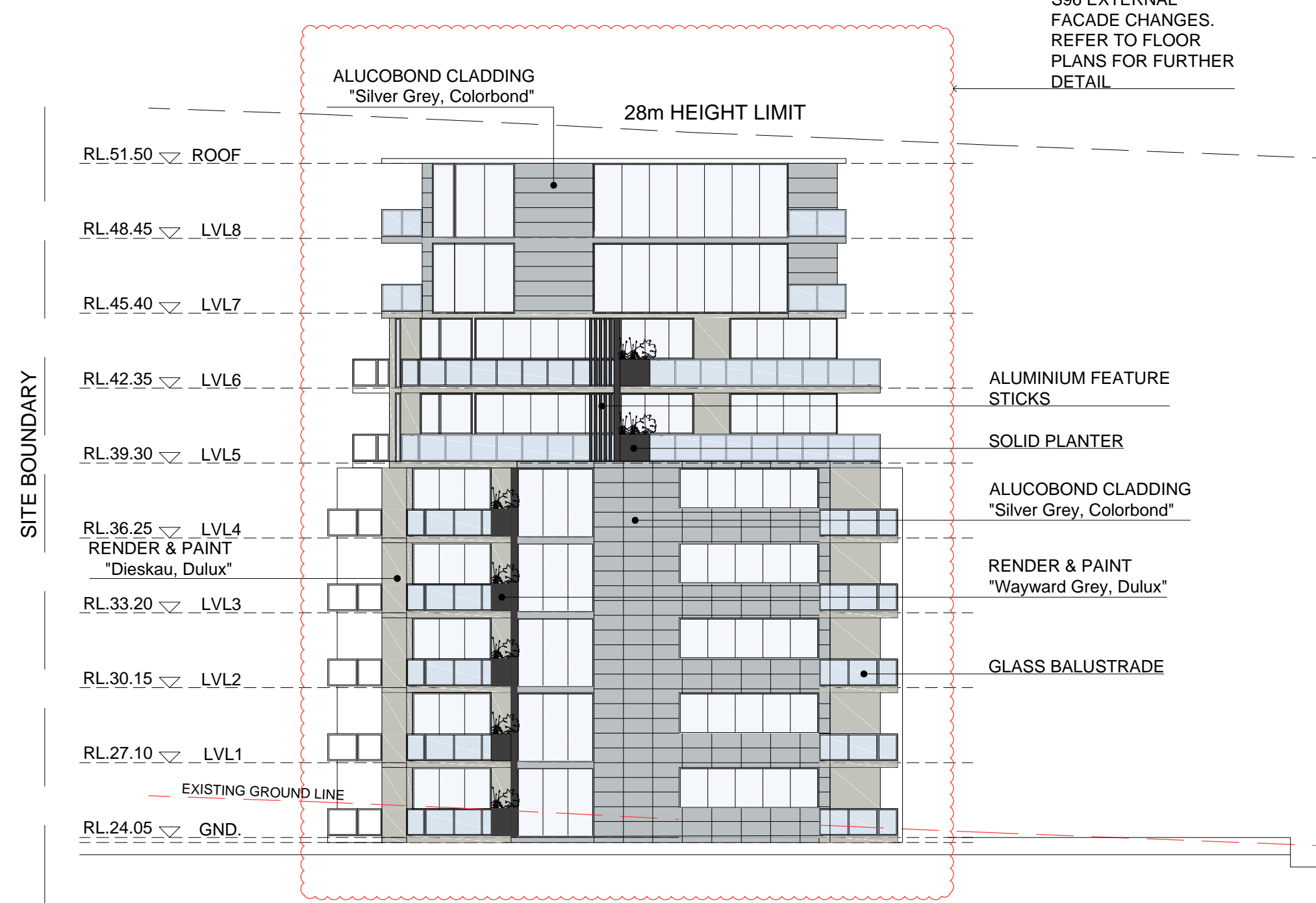
## NORTH ELEVATIONS



## SOUTH ELEVATIONS



## WEST ELEVATIONS



## EAST ELEVATIONS



Dieskau, Dulux GR12



Malay Grey, Dulux GR11



Wayward Grey, Dulux GR7



Silver Grey, Alucobond

NOTE:  
ALL DIMENSIONS AND LEVELS ARE TO BE CHECKED ON SITE. PRIOR TO THE COMMENCEMENT OF WORK. DRAWINGS ARE NOT TO BE SCALED. USE ONLY FIGURED DIMENSIONS.  
THIS DRAWING IS PART OF A SET AND MUST BE READ IN CONJUNCTION WITH ALL OTHER DOCUMENTS INCLUDING THE DOOR AND FINISHES SCHEDULES. DO NOT USE THIS DRAWING IN ISOLATION.

COPYRIGHT:  
INFORMATION ON THIS DRAWING IS THE COPYRIGHT OF CONQUEST DEVELOPMENTS  
COPYING OR USING THIS DRAWING IN WHOLE OR IN PART WITHOUT WRITTEN PERMISSION INFRINGES COPYRIGHT.

SHEET TITLE:  
ELEVATIONS – BUILDING A

LOGGED AT: STRATHFIELD COUNCIL

DRAWN BY:  
NE

CHECKED BY:  
NM

DATE:  
JULY 2017

PROPOSED RESIDENTIAL DEVELOPMENT  
84 CENTENARY DRIVE,  
STRATHFIELD NSW 2135

JOB No.  
038-S96-15

ISSUE:  
B

SCALE:  
1:100 @ B1

DESCRIPTION

B	REVISED	16.10.2017	NE
A	S96 APPLICATION	19.07.2017	NE
ISSUE	AMENDMENT	DATE	DRAWN

THE GREENS by  
p: (02) 8212 5592 f: (02) 8079 5976

conquest

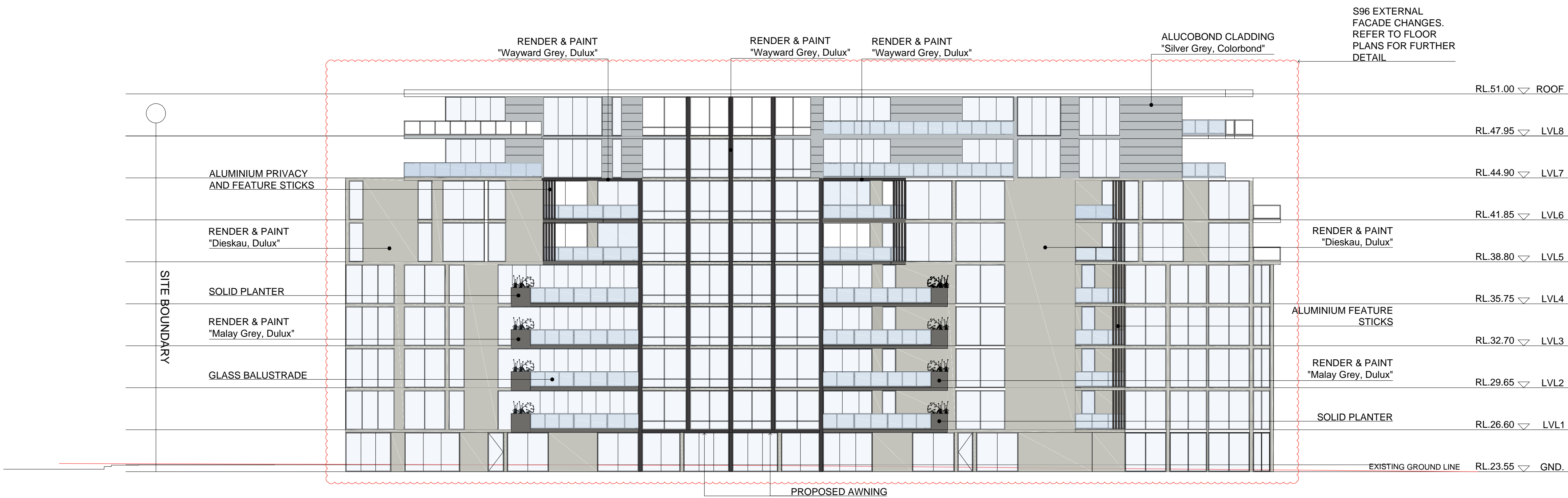
Elevations  
Building A

STRATHFIELD COUNCIL  
RECEIVED  
  
DA2015/100/03  
16 October 2017

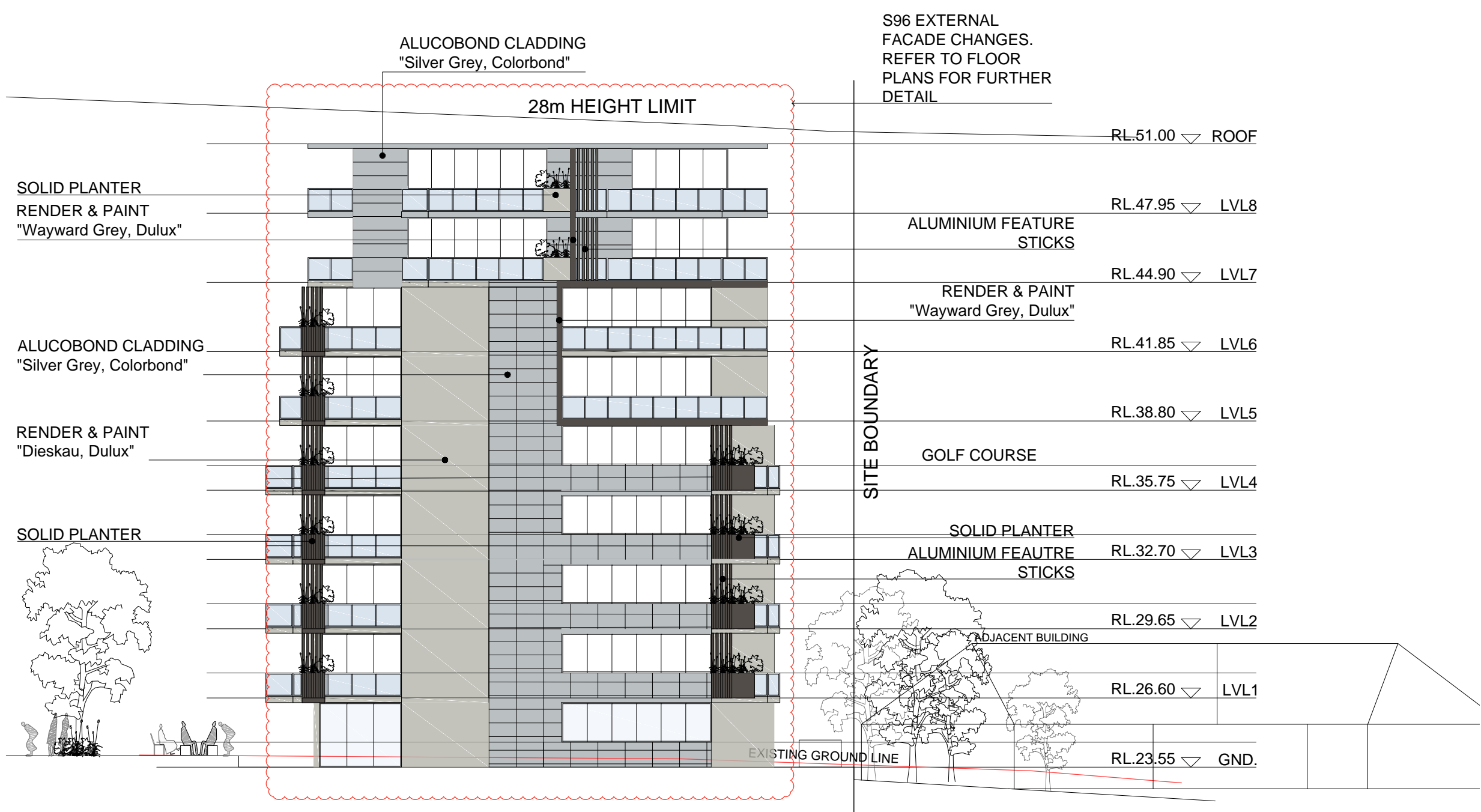
STRATHFIELD COUNCIL  
APPROVAL  
  
DA2015/100/03  
Date: 20/12/2017



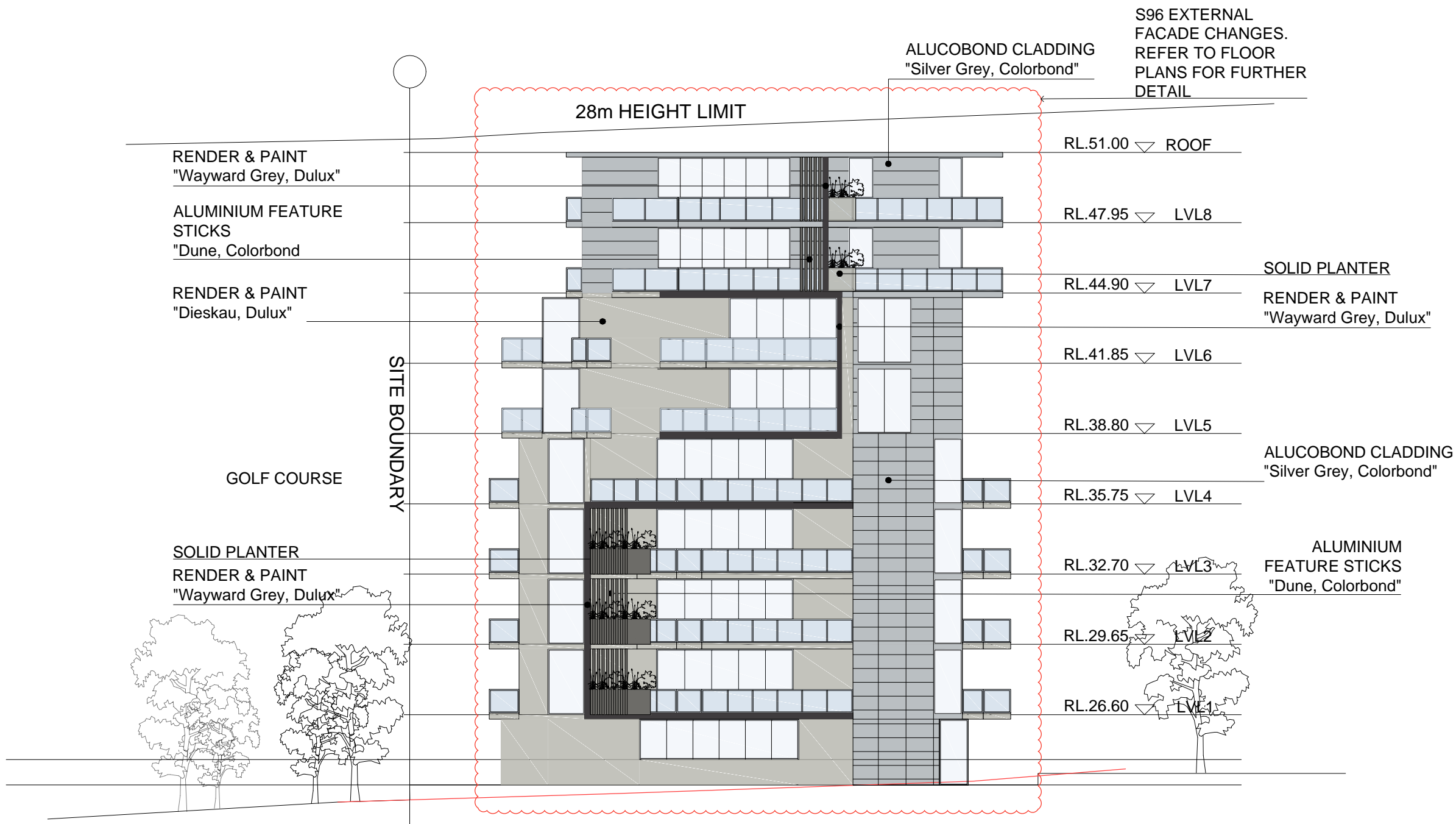
NORTH ELEVATIONS



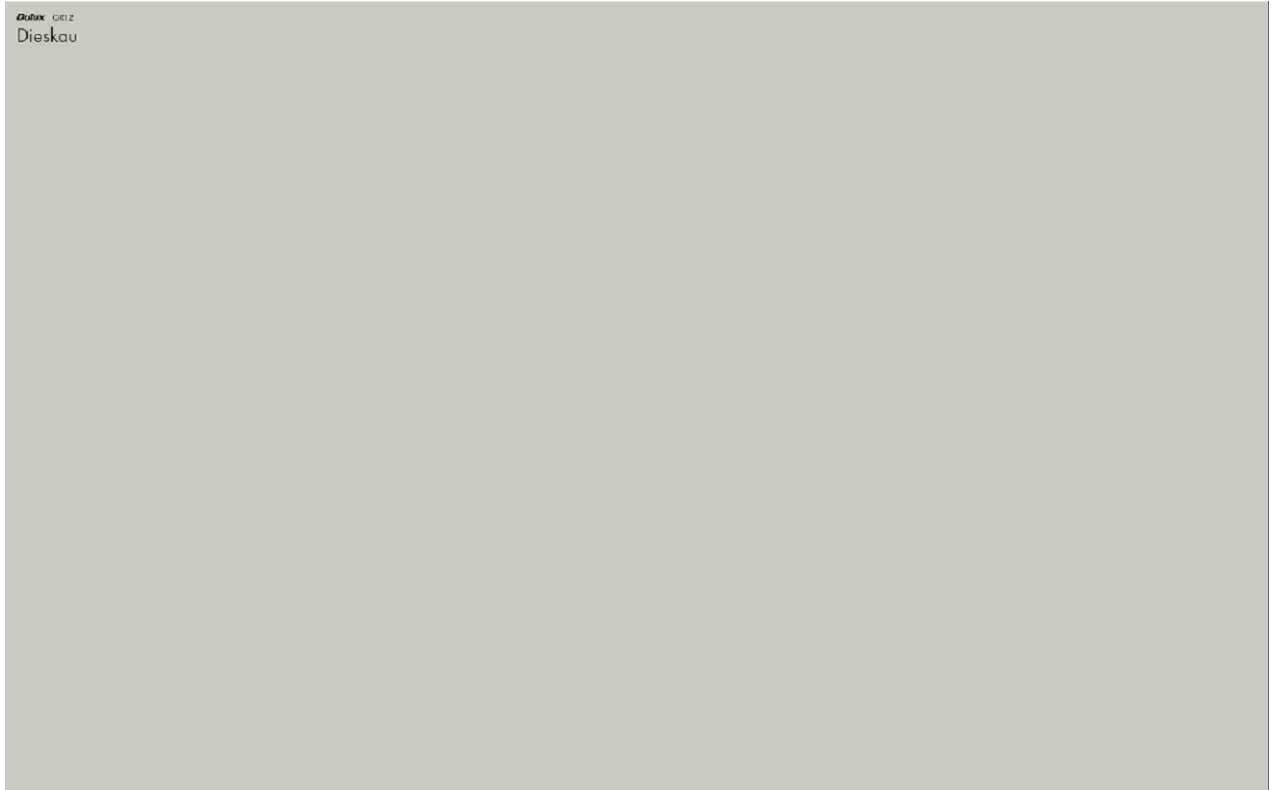
SOUTH ELEVATIONS



EAST ELEVATIONS



WEST ELEVATIONS



Dieskau, Dulux GR12



Malay Grey, Dulux GR11



Wayward Grey, Dulux GR7



Silver Grey, Alucobond

NOTE:  
ALL DIMENSIONS AND LEVELS ARE TO BE CHECKED ON SITE. PRIOR TO THE COMMENCEMENT OF WORK. DRAWINGS ARE NOT TO BE SCALED. USE ONLY FIGURED DIMENSIONS.  
THIS DRAWING IS PART OF A SET AND MUST BE READ IN CONJUNCTION WITH ALL OTHER DOCUMENTS INCLUDING THE DOOR AND FINISHES SCHEDULES. DO NOT USE THIS DRAWING IN ISOLATION.

COPYRIGHT:  
INFORMATION ON THIS DRAWING IS THE COPYRIGHT OF CONQUEST DEVELOPMENTS  
COPYING OR USING THIS DRAWING IN WHOLE OR IN PART WITHOUT WRITTEN PERMISSION INFRINGES COPYRIGHT.

SHEET TITLE:  
ELEVATIONS

LOGGED AT: STRATHFIELD COUNCIL

DRAWN BY:  
NE

CHECKED BY:  
NM

DATE:  
JULY 2017

PROPOSED RESIDENTIAL DEVELOPMENT  
84 CENTENARY DRIVE,  
STRATHFIELD NSW 2135

JOB No.  
038-S96-16

ISSUE:  
B

SCALE:  
1:100 @ B1

DESCRIPTION

B REVISED  
A S96 APPLICATION  
ISSUE AMENDMENT

16.10.2017 NE  
19.07.2017 NE  
DATE DRAWN

Elevations  
Building B  
  
THE GREENS by  
p: (02) 8212 5592 f: (02) 8079 5976  
**conquest**



STRATHFIELD COUNCIL  
RECEIVED  
DA2015/100/03  
16 October 2017

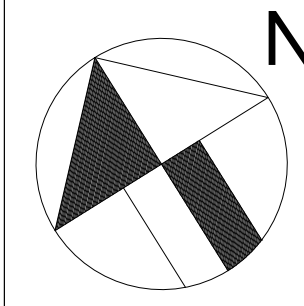
STRATHFIELD COUNCIL  
APPROVAL  
DA2015/100/03  
Date: 20/12/2017

- BALCONIES
- HABITABLE
- NON-HABITABLE

Level 2-4  
Building Separation

THE GREENS by  
p: (02) 8212 5592 f: (02) 8079 5976  
**conquest**

NOTE:  
ALL DIMENSIONS AND LEVELS ARE TO BE CHECKED ON SITE PRIOR TO THE COMMENCEMENT OF WORK. DRAWINGS ARE NOT TO BE SCALED. USE ONLY FIGURED DIMENSIONS.  
THIS DRAWING IS PART OF A SET AND MUST BE READ IN CONJUNCTION WITH ALL OTHER DOCUMENTS INCLUDING THE DOOR AND FINISHES SCHEDULES. DO NOT USE THIS DRAWING IN ISOLATION.



SHEET TITLE:  
BUILDING SEPARATION

LOGGED AT: STRATHFIELD COUNCIL

DRAWN BY:  
NE  
CHECKED BY:  
NM  
DATE:  
JULY 2017

PROPOSED RESIDENTIAL DEVELOPMENT  
84 CENTENARY DRIVE,  
STRATHFIELD NSW 2135  
JOB No.  
038-S96-20

ISSUE:  
A  
SCALE:  
1:200 @ B1

DESCRIPTION

A  
ISSUE

S96 APPLICATION  
AMENDMENT

19.07.2017  
DATE

NE  
DRAWN

STRATHFIELD COUNCIL  
APPROVAL  
DA2015/100/03  
Date: 20/12/2017

STRATHFIELD COUNCIL  
RECEIVED  
DA2015/100/03  
16 October 2017

BUILDING B  
STAGE 2  
9 STOREY

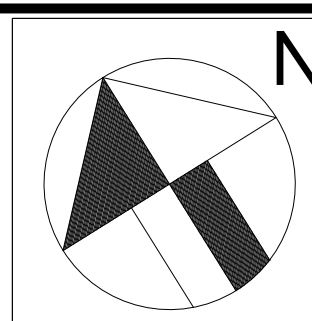
BUILDING A  
STAGE 2  
9 STOREY

BALCONIES  
HABITABLE  
NON-HABITABLE

Level 5-6  
Building Separation

THE GREENS by  
p: (02) 8212 5592 f: (02) 8079 5976  
**conquest**

NOTE:  
ALL DIMENSIONS AND LEVELS ARE TO BE CHECKED ON SITE. PRIOR TO THE  
COMMENCEMENT OF WORK, DRAWINGS ARE NOT TO BE SCALED. USE ONLY FIGURED  
DIMENSIONS.  
THIS DRAWING IS PART OF A SET AND MUST BE READ IN CONJUNCTION WITH ALL  
OTHER DOCUMENTS INCLUDING THE DOOR AND FINISHES SCHEDULES. DO NOT USE  
THIS DRAWING IN ISOLATION.



SHEET TITLE:  
BUILDING SEPARATION

LOGGED AT: STRATHFIELD COUNCIL

DRAWN BY:  
NE  
CHECKED BY:  
NM  
DATE:  
JULY 2017

PROPOSED RESIDENTIAL DEVELOPMENT  
84 CENTENARY DRIVE,  
STRATHFIELD NSW 2135  
JOB No.  
038-S96-21

ISSUE:  
A  
SCALE:  
1:200 @ B1

DESCRIPTION

A S96 APPLICATION  
ISSUE AMENDMENT

19.07.2017 NE  
DATE DRAWN

